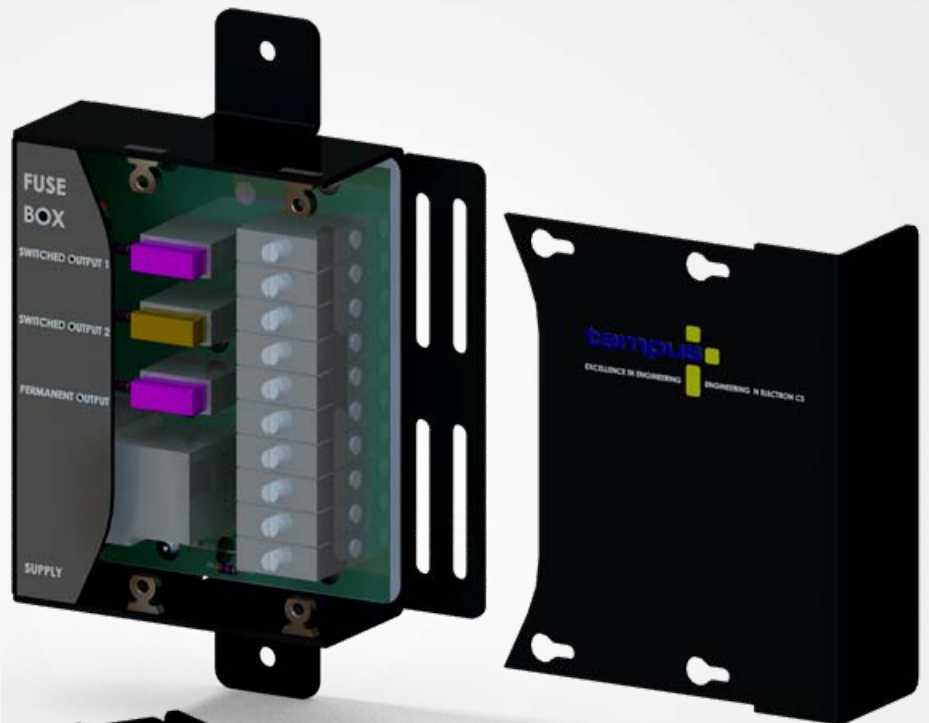


T1202 TEMPUS POWER DISTRIBUTION UNIT

EXCELLENCE IN ENGINEERING - ENGINEERING IN ELECTRONICS
 Units 3 – 5 The Sahota Centre, Heath Street, Smethwick. B66 2SA

The Tempus T1202 Power Distribution Unit has been designed from the ground up with the installer of IT equipment in vehicles in mind. It has the benefits of reducing installation costs & minimizing unnecessary downtime & productivity in the mobile workforce - all at a low cost.



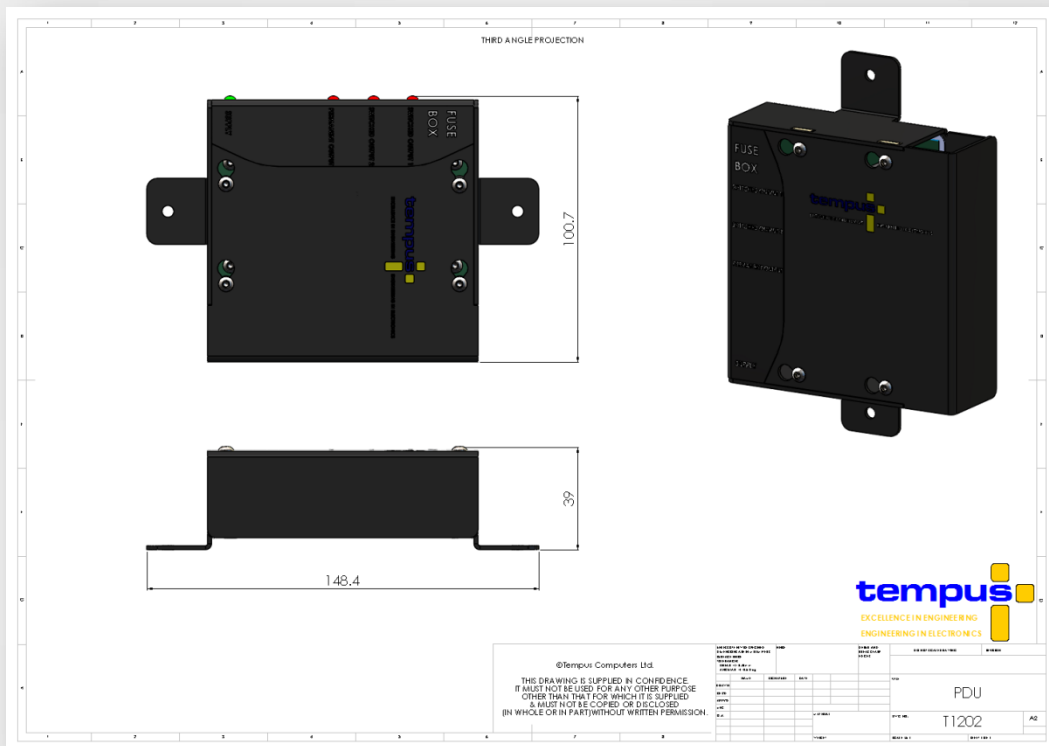
The unit is designed to accept a fused 9V to 15V input from the vehicles battery & to distribute this power to a number of devices in a convenient & rugged manner.

Manufactured from powder coated steel & installed by simply using two fasteners, the 'PDU' provides two switched & one permanent output channels which can each handle a maximum current of 10A.

High quality screw terminals ensure that no special tools are required to make the desired connections which helps reduce installation costs. Conversely, the de-installation of the device is extremely simple allowing the user to relocate the device in a different vehicle when necessary.

T1202 TEMPUS POWER DISTRIBUTION UNIT

EXCELLENCE IN ENGINEERING - ENGINEERING IN ELECTRONICS
 Units 3 – 5 The Sahota Centre, Heath Street, Smethwick. B66 2SA



The three output channels are separately fused & the status of all power feeds can be determined by observing the four external LED's. The first (green) LED indicates that power is entering the unit from the vehicles battery. The other three (red) LED's indicate the power status of each of the three channels. By observing the LED's it is very straightforward for either vehicle users or indeed support staff to determine a host of potential faults – including something as simple as a blown fuse. This way, the potential is there to reduce or eradicate the need for the vehicle operator to employ the services of a professional garage or mobile repairer to fix simple issues – reducing costs & lost productivity along the way.

The unit has two inputs – the first is the main feed from the vehicles battery, the second accepts a sense wire which can either be wired to the ignition system or a separate switch mounted in a convenient location within the vehicle. This sense wire controls two of the DC output channels & is designed to be connected to devices which do not intend to be permanently active. The third DC output channel has a permanent output & is designed to be connected to devices which need constant power such as critical safety or communications equipment.

The unit has a neat & tidy appearance once fitted – all cables coming into the unit can be locked down with cable ties through the built in 'cable tie rail' to minimize the possibility of disruption & disconnection. The cover is then retained in place by four fasteners & completely covers the cables for maximum protection & reliability.

Although the unit was predominantly designed with the vehicle based IT equipment user in mind, this does not limit the possibilities for other use with different equipment or in other platforms.

Tel: +44 (0)121 555 8010

Fax: +44 (0)121 555 8977

Email: sales@developments.tempus.co.uk

Web: www.tempus.co.uk/developments